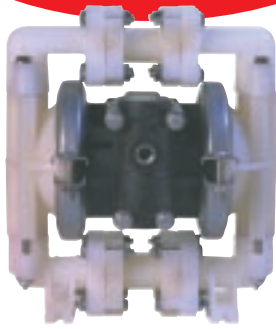


# 1/2"

## BAND CLAMP SERIES



### PLASTIC MODELS:

<b>NC-5</b> (Polypropylene/Geolast®)	8 lbs. (3,6 kg.)
<b>BK-5</b> (Polypropylene/PTFE)	8 lbs. (3,6 kg.)
<b>RD-5</b> (Nylon/PTFE)	8 lbs. (3,6 kg.)
<b>KN-5</b> (PVDF/PTFE)	11 lbs. (4,9 kg.)

- Optional elastomers available.
  - Geolast® properties are similar to that of Nitrile (Buna-N)
- See page 4 for complete model listing.

### SPECIFICATIONS:

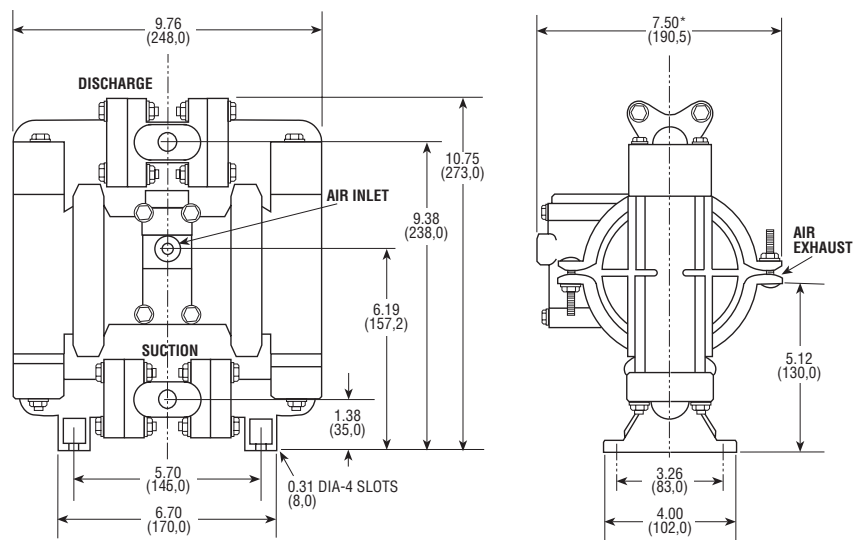
- Capacity:**  
Adjustable . . . . . 0 to 14 GPM (53,2 liters/min.)
- Maximum Temperature:**  
KN-5 Model . . . . . 200°F (93°C)  
Other Plastic Models . . . . . 150°F (66°C)
- Maximum Air Pressure:**  
All Models . . . . . 100 PSI (6,8 bar)
- Minimum Air Pressure:**  
All Models . . . . . 20 PSI (1,3 bar)
- Dry Lift Capacity @ 100 PSI (6,8 bar):**  
Models w/PTFE balls . . . . . 10 ft. (3 meters)  
Other Models . . . . . 15 ft. (4,5 meters)
- Maximum Solids:** . . . . . 1/8" (3,2 mm)
- Air Supply:**  
Inlet . . . . . 1/4" NPT Female
- Air flow control valve supplied, 1/4" NPT or 1/2" BSP Female
- Outlet . . . . . 3/8" NPT Female
- Muffler supplied

- Fluid Inlet/Discharge:**  
All Models . . . . . 1/2" NPS Female  
(BSP or NPT Compatible)
- For optional dual manifold inlet/outlet, add -P25 to Model No.

### Dual manifolds (optional) for 1/2" clamped models

1. The pump can be used as two pumps in one, isolating two different fluids or recycling on one side and using the opposite side for delivery.
  2. A dual manifold used only on the suction side of the pump can be used to mix two different fluid that must be kept separate prior to transfer such as a two part epoxy.
  3. A dual manifold used only on the discharge side of the pump will split the delivery.
- Add -P25 after the model number to have the pump configured at the factory with dual manifolds. 1/2" Plastic Band Clamp models only.
  - Fluid must be transferred through both sides of the pump.

### PLASTIC Dimensions in inches and (mm). Ports shown facing front for dimensional purposes.



\*Approximate Dimension with Muffler— 8.00 (203.2)

### PERFORMANCE CURVE (Based on water-flooded suction)

