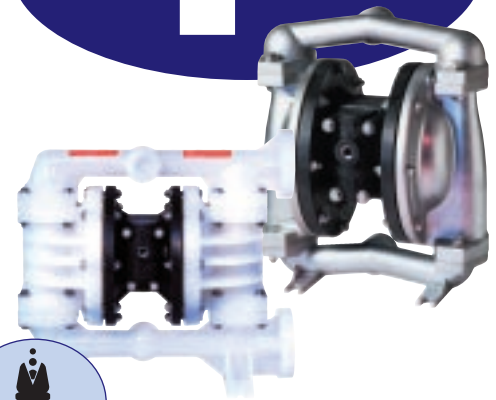
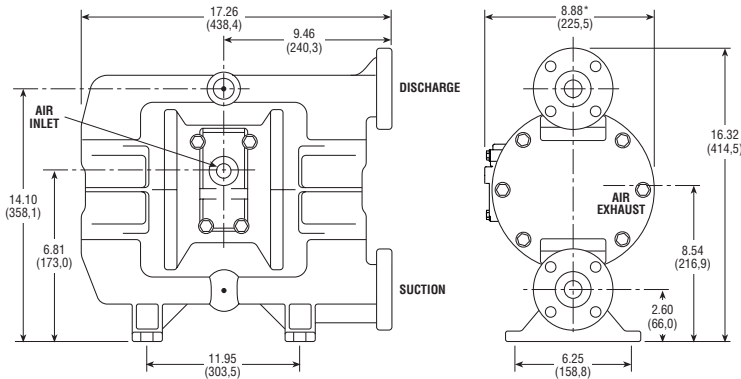


BOLTED SERIES

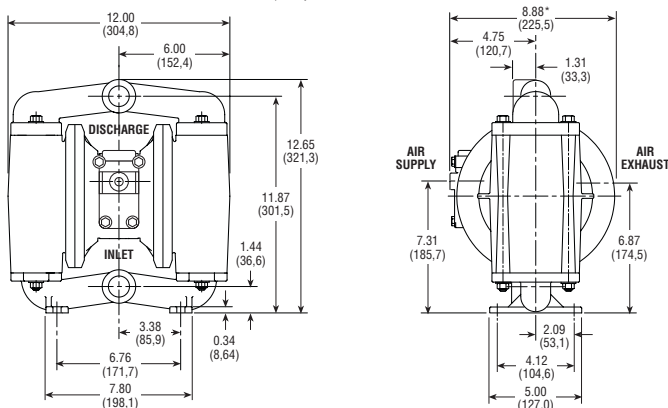
1"



PLASTIC Dimensions in inches and (mm).



METALLIC Dimensions in inches and (mm).



*Approximate Dimension with Muffer—10.25 (260,4)

PLASTIC MODELS:

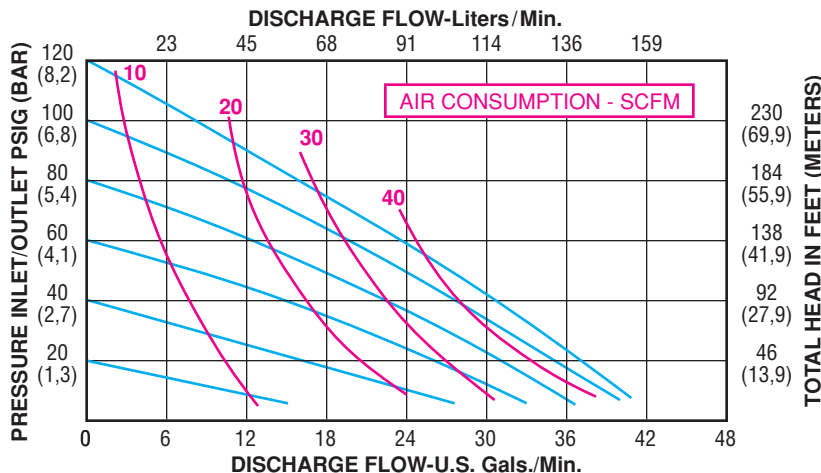
PB-10 (Polypropylene/Geolast®)	20 lbs. (9,1 kg.)
PE-10 (Polypropylene/Santoprene®/EPDM)	20 lbs. (9,1 kg.)
PT-10 (Polypropylene/PTFE)	20 lbs. (9,1 kg.)
PV-10 (Polypropylene/Viton®)	20 lbs. (9,1 kg.)
KT-10 (PVDF/PTFE)	30 lbs. (13,7 kg.)
KE-10 (PVDF/Santoprene®/EPDM)	30 lbs. (13,7 kg.)
KV-10 (PVDF/Viton®)	30 lbs. (13,7 kg.)

METALLIC MODELS:

AB-10 (Aluminum/Geolast®)	23 lbs. (10,5 kg.)
AE-10 (Aluminum/Santoprene®/EPDM)	23 lbs. (10,5 kg.)
AT-10 (Aluminum/PTFE)	23 lbs. (10,5 kg.)
AV-10 (Aluminum/Viton®)	23 lbs. (10,5 kg.)
SB-10 (316 SS/Geolast®)	45 lbs. (20,4 kg.)
SE-10 (316 SS/Santoprene®/EPDM)	45 lbs. (20,4 kg.)
SP-10 (316 SS/PTFE)	45 lbs. (20,4 kg.)
SV-10 (316 SS/Viton®)	45 lbs. (20,4 kg.)

All fasteners are 18-8 stainless steel (comparable to 302-304).

PERFORMANCE CURVE (Based on water-flooded suction)



SPECIFICATIONS:

- Capacity: Adjustable 0 – 41 GPM (155,8 liters/min.)
- Maximum Temperature:
 - KT-10 Model 200°F (93°C)
 - Other Plastic Models 150°F (66°C)
 - Metallic Models 200°F (93°C)
- Maximum Air Pressure:
 - All Models 120 PSI (8,0 bar)
- Minimum Air Pressure:
 - All Models 20 PSI (1,2 bar)
- Dry Lift Capacity @ 120 PSI (8 bar):
 - Models w/PTFE balls 10 ft. (3 meters)
 - Other Ball Check models 15 ft. (4,5 meters)
 - Plastic models w/Max-Pass valve. 18 ft. (5,5 meters)
- Maximum Solids: 1/4" (6,4 mm)
- Optional Max-Pass valves 3/4" (19 mm)

Air Supply:

- Inlet 1/4" NPT Female
- Outlet 3/8" NPT Female
- Muffer supplied

Fluid Inlet/Discharge:

- Plastic Models . . . 1" Flange ANSI/DIN compatible
- Metallic Models 1" NPT

• For optional BSP threads add - P15 to Model No.

• For Plastic Pumps Only: Stock models have a flanged side port. Optional threaded center ports must be specified when ordering (See options page for code).



NEW OPTIONAL MAX-PASS VALVE SYSTEM (Plastic Pumps Only)

- Increases solids handling capability by 300% and suction lift by 25%
- Up to 3/4" solids for the 1" bolted plastic pumps
- Abrasion resistant
- 360° mounting capability
- To order the Max-Pass valve system add the following code to the model number: -M4 (Nitrile), M5 (EPDM), M40 (Viton FDA)

Ideal for inks, paints, slurries, and other specialized applications